





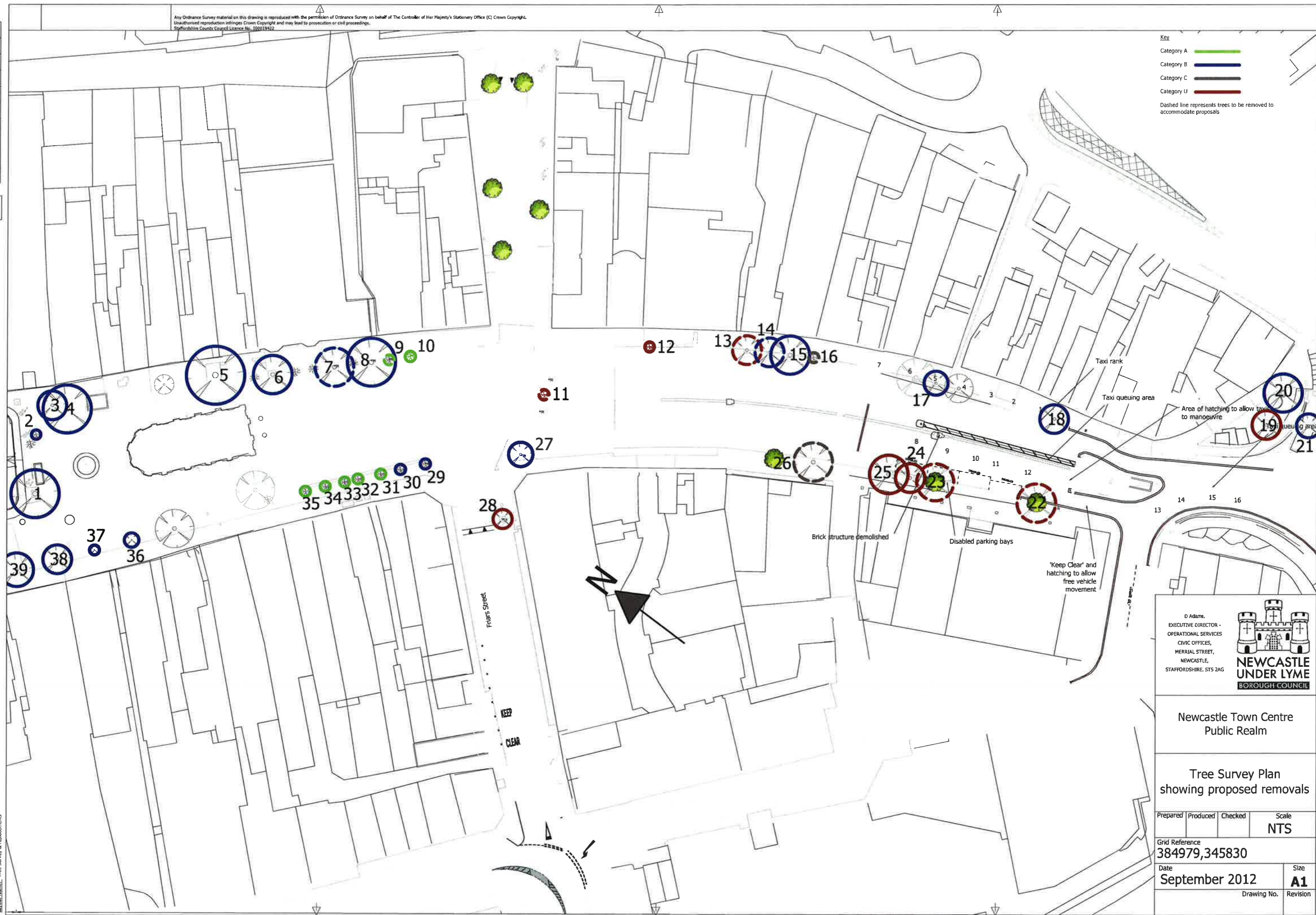
Any Ordnance Survey material on this drawing is reproduced with the permission of Ordnance Survey on behalf of The Controller of Her Majesty's Stationery Office (C) Crown Copyright. Unauthorized reproduction infringes Crown Copyright and may lead to prosecution or civil proceedings. Staffordshire County Council Licence No. 100019422

Key
 Category A 
 Category B 
 Category C 
 Category U 
 Dashed line represents trees to be removed to accommodate proposals


A1

Tree to this left of A1

File Name: X:\PROJECTS\Projects\Public Realm\August 2012\Plan\Tree Survey.dwg
 Layer Name: Tree Survey & replacements



D Adams,
 EXECUTIVE DIRECTOR -
 OPERATIONAL SERVICES
 CIVIC OFFICES,
 MERRIAL STREET,
 NEWCASTLE,
 STAFFORDSHIRE, ST5 2AG



**NEWCASTLE
 UNDER LYNE**
 BOROUGH COUNCIL

Newcastle Town Centre
 Public Realm

Tree Survey Plan
 showing proposed removals

Prepared	Produced	Checked	Scale
			NTS
Grid Reference			
384979,345830			
Date			Size
September 2012			A1
Drawing No.		Revision	